

# Spring-operated cable reel

## with slip ring assembly

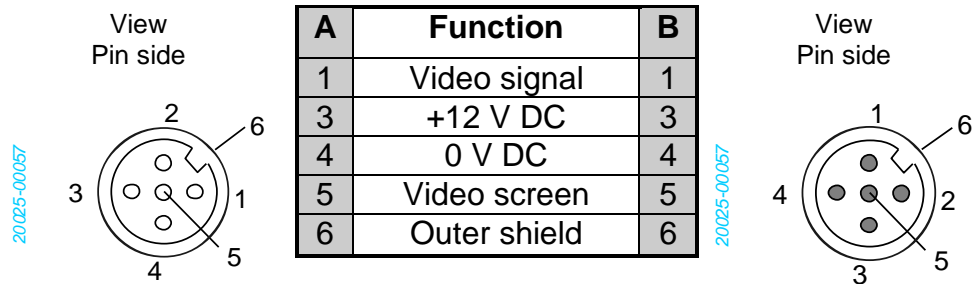
Using the video line to transmit video signals.



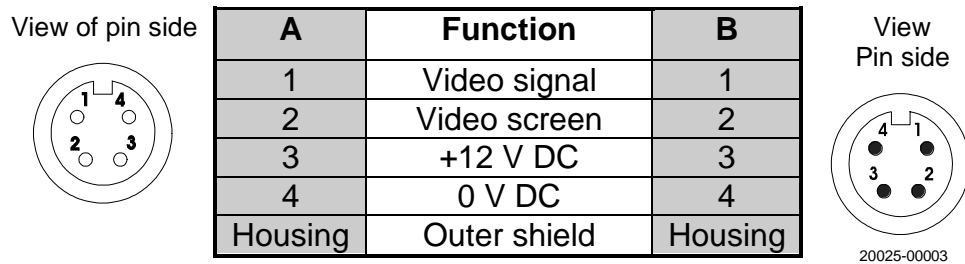
### Technical Data

Winding length	Max. 10 m
Cable diameter	Approx. 9 mm
Weight of cable	90 g per metre
Direction of pull	Vertically up or down
Winding direction	Left, when looking at the body of the slip ring
Shock-resistant	10 g
Weight	Approx. 10.2 kg
Operating temperature range	-10°C to +80°C
Storage temperature range	-30 °C to +80°C
Housing protection class	IP 66
Housing	Metal
Dimensions	Ø 240 mm x 208 mm
Number of slip rings	4
Current carrying capacity	Maximum 2 A
Cable connection	Optional M12 or M16 plug connectors
Cable type	Motec MTP cable

## Pin assignment M12/5-pin



## Pin assignment M16/4-pin



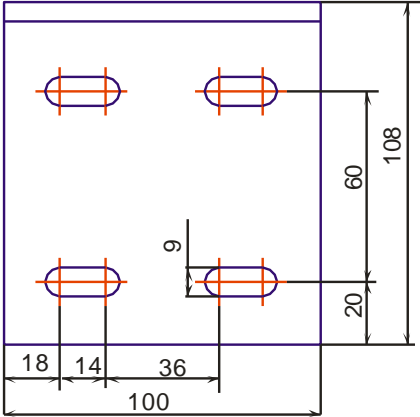
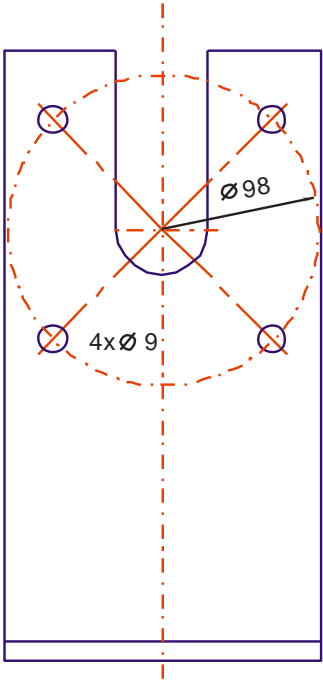
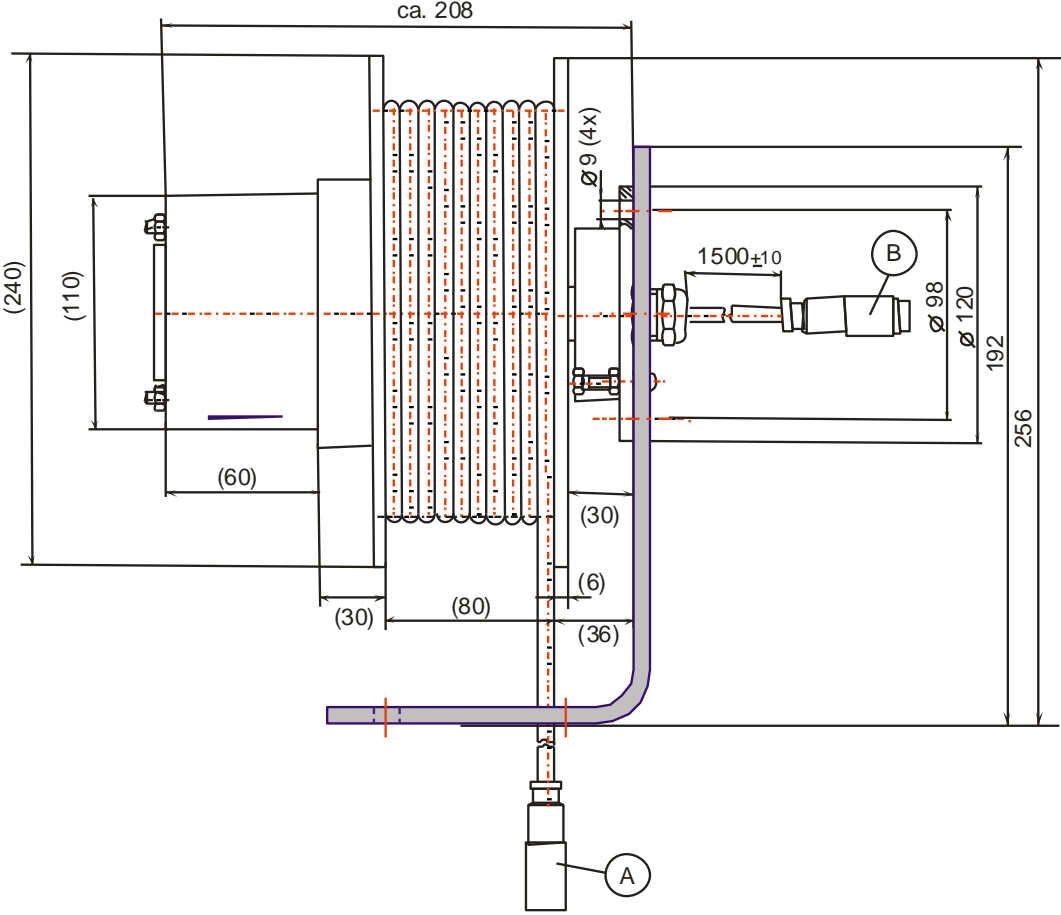
## Spare parts

Match code	Description	Item No.:
FLT-S.10 Slip ring, brass	Slip ring spare part, brass	8100219002
FLT-S.10 Slip ring spare part, gold-plated	Slip ring spare part, gold-plated	8100219000
FLT-S.10 Slip ring brush	Slip ring brush	8100219001
MK350.11 (M16 connector plug)	Replacement cable for drum (11 m)	4030350011
MK591.11 (M12 connector plug)	Replacement cable for drum (11 m)	4030591011

**Motec GmbH**  
 Oberweyerer Straße 21  
 65589 Hadamar - Steinbach  
 GERMANY

**Phone** +49 6433 9145-0  
**Fax** +49 6433 9145-45  
**E-Mail** [info@motec-cameras.com](mailto:info@motec-cameras.com)  
**Web** [www.motec-cameras.com](http://www.motec-cameras.com)

# Dimensions in mm



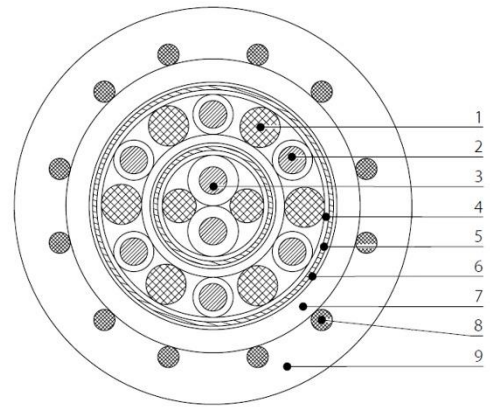
**Motec GmbH**  
 Oberweyerer Straße 21  
 65589 Hadamar - Steinbach  
 GERMANY

**Phone** +49 6433 9145-0  
**Fax** +49 6433 9145-45  
**E-Mail** info@motec-cameras.com  
**Web** www.motec-cameras.com

# Motec cable MTP

## Cable design:

Pos. 1	6 wires	0.25 mm <sup>2</sup>
	Conductor	(19 x 0.13 mm) bare copper
	Insulation	TPE
	Colours	green, yellow, grey, pink, blue, red
Pos. 2	Filler	
Pos. 3	1 wire pair	0.25 mm <sup>2</sup>
	Conductor	(19 x 0.13 mm) bare copper
	Insulation	TPE
	Colours	white/brown
	Fibrous mat	highly flexible
	Shield	opt. Coverage approx. 100%
	Conductor	stranded (0.10 mm) galvanised copper opt. Coverage at least 90%
	wrapping	
	Jacket	TPE
	Colour	black
Pos. 4	Fibrous mat	highly flexible
		opt. Coverage approx. 100%
Pos. 5	Shield	stranded
	Conductor	(0.10mm) galvanised copper opt. Coverage at least 90%
Pos. 6	Wrapping	
Pos. 7	Support mesh	Kevlar, for strain relief
		min. 1200 N
Pos. 8	Jacket	polyurethane; flame-resistant, non-halogen design
	Colour	black
Pos. 9	outer jacket	polyurethane; flame-resistant, non-halogen design
	Colour	black



## Technical Data:

UL Style 20236 80°C; 30 V

### Cable designation:

Operating voltage: 450 V  
 Test voltage wire/wire: 2,500 V DC  
 Test voltage wire/shield: 1,500 V DC  
 Test voltage shield/shield: 1,500 V DC  
 Operating temperature: -40°C to +80°C  
 Weight of cable: nom. 114 g per metre

Hybrid round cable ERK 10248 Rev. 7  
 6 x 0.25 mm<sup>2</sup>, 1 x 2 x 0.25 mm<sup>2</sup>  
 Diameter 9.4 ±0.2 mm

Pos. 3:  
 Shaft resistance: 72 Ohm ±10% at 5.5 MHz  
 Operating capacity: nom. 120 pF/m at 5.5 MHz  
 Damping: nom. 1.65 dB/10 m at 5.5 MHz

Pressure:



Motec MTP UL 20236 80°C 30V

### Bending radii:

One bend per routing: 2 x cable diameter  
 minimum bending radius at constant movement: 5 x cable diameter  
 optimum bending radius at constant movement: 10 x cable diameter

**Motec GmbH**  
 Oberweyerer Straße 21  
 65589 Hadamar - Steinbach  
 GERMANY

**Phone** +49 6433 9145-0  
**Fax** +49 6433 9145-45  
**E-Mail** info@motec-cameras.com  
**Web** www.motec-cameras.com